



Welcome to The
Targeted Solutions...





CLEBER brand has been formed by MEDOSEL MEDICAL GROUP with 15 years of experience.
CLEBER's main areas of activity include the following products;

ENT examination chairs
Blood taking seats
Gynecological examination chairs
Chiropractic Chairs
ENT and gynecology furniture systems
Laboratory cabinets
Podology units
ECG stands
Laparoscopic tables
Gastroscope tables
ENT endovision stands
ENT Units

CLEBER, with its widespread dealer and service network, stands out in the sector with its products and practical solutions with certain standards that take into customer satisfaction and human health.

CLEBER starts out with the principle of human health and perfect operation on health products and services.

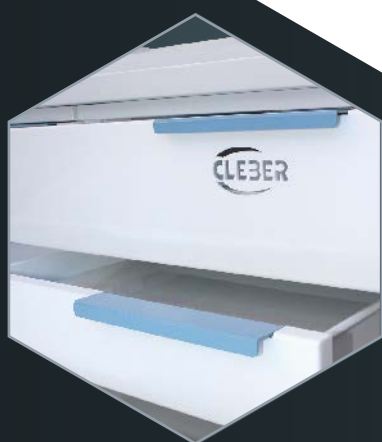
CLEBER's employees are disciplined, experienced and believe the value of customer and human health.

CLEBER assists you with a reliable and respectable place in the industry with confident steps without compromising on quality.



MASSA&LUCCA

ENT UNITS



Inovative and Intelligent Solutions for ENT

Get rid of device and cabinet clutter

MASSA and LUCCA offers compact solutions for an easy access to equipment by providing a large storage space.

It is clear how speed is important for patient circulation. LED UV technology saves your time by having a short disinfection period.

Solutions for Decoration with Different Color Options for Each Polyclinic

Up to 7 Pieces of Device Holders
4 pieces Optic or Flexible Scope Slots
Fiber-Optic Cable Slot
Aspirator Tube Holder
Camera Head Holder
Antistatic 4 wheels (2 lockable)

SPEED AND CONTINUITY

Ready to use in 20 minutes!

The LED UV drawer stops automatically after 20 minutes and prepares you for the next patient.

MASSA with 7 drawers and LUCCA with 3 drawers provides wide storage space. Soft close mechanism; the drawers close slowly when pushed.

The aspiration and endovision system help ensuring maximum performance even in small areas.

INTERNAL ASPIRATOR SYSTEM

The suction power of the aspirator can be monitored and easily changed with the buttons on the front panel.

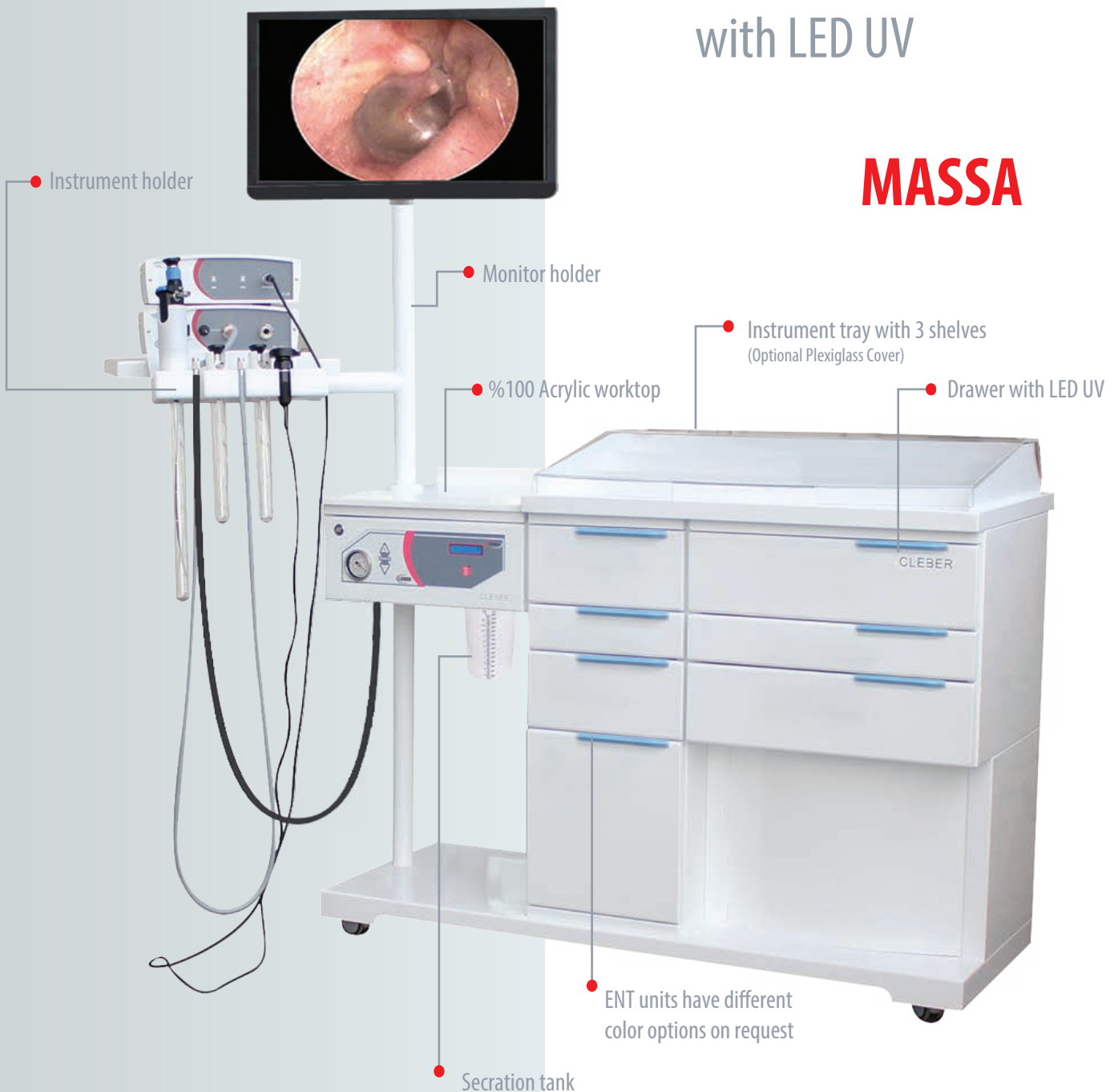
It has 40 lt motor power per minute. The one-hand secretion tank provides a waste capacity of 1L or 2L.

Thanks to the sensors when the aspirator hose is removed from the slot, the system automatically starts the aspiration and stops when put back.

The aspirator motor is protected by a 20 micron dirt trap filter.

The First and Only One ENT Unit with LED UV

MASSA



Quiet Working Environment
with Strong Aspirator

LUCCA



KGZ360&KGD180

ENT EXAMINATION
CHAIR



KGZ 360



KGD 180



KGD 180

Move to the programmed position with 4 memory buttons

The back part can be left in the desired position between 90° and 180°

Can rotate 360° around own axis

Becomes a bed when in 180° position

Ability to reach 0 position with one button

All functions can be done with control panel

Up and down movement between from 53cm up to 75cm





KGZ 360

TABA 001

It can rotate 360° around own axis
Hydraulic shock absorber system
5 wheels system
Backrest support

EASE OF INTERVENTION

- Oppenable armrest
- Can be fixed with lock system
- Synchronized backrest with feet movement
- Easy-to-clean leatherette
- Up and down movement between from 60cm up to 86cm

Easy to move
during the process

KGZ 360

- Fully electrical system for easy positioning
- The long and wide backrest provides comfort for the patients by the reverse Z piston system
- The back rest and feet base work in sync, so they are easy to put into position
- Ergonomic design and easy to use
- 360 degree movement ability around own axis
- Quick positioning thanks to the position memory
- Ability to reach 0 position with one button
- Possible to have horizontal position
- 4 memory buttons
- Has a DEMO program
- The seat cover is made of Termoform Polistren material
- The backrest is anatomical and can be adjusted to any position between 90° and 180°
- All fuctions can be done with control panel



ENDOLED & ENDOHAL

ENDOVISION SYSTEMS



The Correct Diagnosis Start with a High Quality Image

ENDOLED

- 1/3 CMOS waterproof camera head
- Full HD Camera
- DVI, Composite and HDMI outputs
- Light source with 50W LED bulb
- Clear and vivid image with 5500 K light power
- 22" digital LED monitor
- Vesa compatibility, it can be installed anywhere
- 0 degree 4m / 175mm autoclavable optic
- 70 degree 4mm / 175mm autoclavable optic
- 4.8mm / 2300mm length autoclavable fiberoptic cable
- Adapter system for compatibility with different brands
- Portable stand system
- Integrated optical disinfection tubes on the stand

Clear Vision Effective Operation

ENDOHAL

- 1/3 CMOS waterproof camera head
- HD Camera
- Composite and HDMI outputs
- 250W double lamp halogen light source
- Clear and vivid image with 3200 K light power
- 22" digital LED monitor
- Vesa compatibility, it can be installed anywhere
- 0 degree 4m / 175mm autoclavable optic
- 70 degree 4mm / 175mm autoclavable optic
- 4.8mm / 2300mm length autoclavable fiberoptic cable
- Adapter system for compatibility with different brands
- Portable stand system
- Integrated optical disinfection tubes on the stand

Save Space and Time

ENDOLED

FULL HD camera

Clear and vivid image with 5500 K light power

Light source with 50W LED

The unpleasant appearance of the cables is eliminated with cable channel

Disinfection of the optics by the tubes

7 device capacity

Saves space

It provides comfortable transportation by wheels

Thanks to the elevator system, can be fixed in the desired position



Save Space with Comfortable Use and Stylish Appearance

ENDOHAL

HD camarea

Clear and vivid image with 3200 K light power

250W double lamp halogen light source

The unplest appearance of the cables is eliminated with cable channel

Disinfection of the optics by the tubes

7 device transport capacity

Saves space

It provides comfortable transportation by wheels

Thanks to the elevator system, can be fixed in the desired position

CAMAC 40 FULL HD

ENDOVISION SYSTEMS

Full High Definition
Quality
High Quality
Operation

CAMAC 40



- 1/3 CMOS waterproof camera head
- 3m cable and high quality LEMO plug
- Full HD image quality and 1920 x 1080p resolution
- Automatic gain control and manual focus
- White / balance setting with one touch
- DVI, Composite and I HDMI outputs
- PAL-NTSC can work
- External service keyboard can be connected
- On screen display menu and video transfer at USB 3.0 speed
- Clear view of flexible endoscopes with anti-moire filter



CAMAC 30

- 1/3 CMOS waterproof camera head
- Full HD Camera
- 3m cable and high quality LEMO plug
- White / balance setting with one touch
- DVI, HDMI, Composite outputs
- Working between 110V and 230V
- PAL-NTSC can work
- External keyboard can be connected
- OSD Menu
- Clear view of flexible endoscopes with anti-moire filter
- Automatic gain control and manual focus



CAMAC 20

- 1/3 CMOS waterproof camera head
- HD Camera
- 3m cable and high quality LEMO plug
- White / balance setting with one touch
- Composite and I HDMI outputs
- Working between 110V and 230V
- PAL-NTSC can work.
- External keyboard can be connected
- Automatic gain control and manual focus



MEDICAL MONITOR

- 21" screen size
- 180 × 1024 pixel high resolution
- 16.7 million colors
- 10 bit digital signal processor
- Different screen display formats



FIBER OPTIC CABLE

- All autoclavable
- Available with different brand light sources
- Available with different brand optics
- Length from 180cm to 300cm
- From 3.5mm to 4.8mm diameter



HLAH 240

Double output standard light source
2 pcs 150W / 250W halogen, Osram branded lamp
Color temperature is 3200K
Silent cooling fan with temperature control
Fiber optic connection with "WOLF"
Works between 110V and 230V
"BF" application part
Illuminated ON/OFF switch
Infinitely adjustable light level



ALED50S

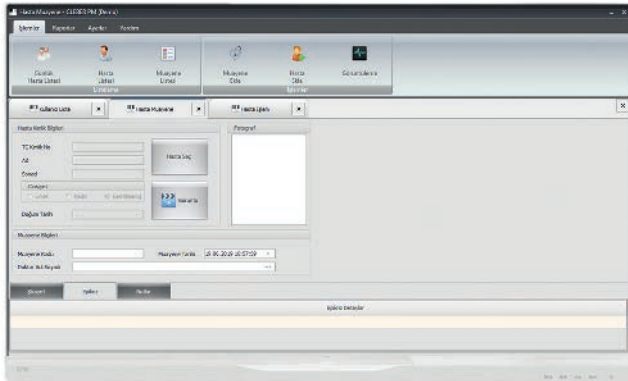
The most up-date technology for LED light source
Latest technology 50W LED bulb
50.000 Lux lighting capacity
Color temperature is 5500K
10.000 hours bulb life depending on usage
Silent cooling fan with temperature control
Fiber optic connection with "WOLF"
Works between 110V and 230V
Single output
"BF" application part
Illuminated ON/OFF switch
Infinitely adjustable light level



ALED50D

The most up-to-date technology for led light source.
Latest technology 50W LED bulb
50.000 lux lighting capacity
Color temperature is 5500K
10,000 hours bulb life depending on usage
Silent cooling fan with temperature control
Fiber optic connection with "WOLF"
Works between 110V and 230V
"BF" application part
Illuminated ON/OFF switch
Infinitely adjustable light level

PATIENT MANAGEMENT SYSTEM



All software in Turkish and designed by Turkish engineers
 Personal data of all patients can be recorded
 SSI records of patients can be archived
 Passport photos of patients can be taken and filed
 Patient records, findings and complaints can be archived
 Search by findings and notes
 One-page patient report is received and searchable by report
 Images can be taken in either photo or video format
 Picture can be taken from video
 Inspection photos can be integrated into the report
 All information and articles can be searched
 Has a database that can be distributed from a single center to 5 physicians



FLASHLIGHT

Voltage: AC90 ~ 240V 50-60Hz
 Introduction Power: 10VA
 Bulb Power: LED 5W
 Color Temperature: 5000 ± 500K
 Charging Time: 5 Hours
 Bulb Life: 50,000 Hours
 Endoscope illumination: > 40.000lx
 Weight: 300gr
 Length: 17.5cmX
 Diameter: 2.2cm
 Has RoHS Certificate
 Light brightness adjustable
 Thanks to the LED display, the usage time is viewable



OPTICS

Front part is made of sapphire glass and unscratchable
 Internal adapters for use with different brand cables
 All made of glass lens and lazer glued
 Compatible with each brand
 Fiber optics light transmission



KLB1002

- %100 freedom of movement with cable free integrated battery
- Each battery autonomy for up to 4 hours of continuous working
- White light with 6000K power
- 70,000 lux with 5W LED
- 420 gr weight
- 4 hours battery time
- Ability to focus from 10mm to 110mm
- Working distance 42cm
- Silent and vibration-free cooling
- Lifetime 50.000h
- Precision optical system consisting of 4 multi-coated lenses
- Work in combination with binocular loupes
- AC 90-240V



KLB1001

- %100 freedom of movement with cable free integrated battery
- Each battery autonomy for up to 4 hours of continuous working
- White light with 5500K power
- 60,000 lux with 3W LED
- 280 gr weight
- 4 hours battery time
- Ability to focus from 10mm to 110mm
- Working distance 42cm
- Silent and vibration-free cooling
- Lifetime 50.000h
- Precision optical system consisting of 4 multi-coated lenses
- Work in combination with binocular loupes
- AC 90-240V



KLF1001

- Light sources supply millions lux quality lighting for head lights
- Precision optical system consisting of 4 multi-coated lenses
- 1.8 high quality fiber optic compatible with every light source brand
- 180 gr weight
- Ability to focus from 10mm to 110mm
- Working distance 42cm
- Detachable forehead cushion and multiple adjustment headband
- Work in combination with binocular loupes

MM101

MICROSCOPES



ALLTION

Alltion is proud to offer YSX series of operation microscopes. Precise structure, new type of appearance and LED illumination system, offer you excellent parfocal, large field view, precise and clear three dimensional images. YSX series of operation microscopes have different working distance and magnification and suitable for the department of Ophthalmology, Stomatology, Gynaecology, ENT and surgery.



FEATURES/SPECIFICATIONS

YSX-101 LED: Straight binocular head/ YSX-102: 45°inclined binocular head
1500mm Super long pantograph arm offers wider operation space
1500mm Super long pantograph arm offers wider operation space
Different working distance objectives: $f=200\text{mm}$, $f=250\text{mm}$
Smooth turret 3-step magnification pod (0.6X, 1X, 1.6X)
Field diameter: 7.88mm-81mm
Magnification: 2.4X-12X
Green and yellow filter selected by a lever

Optional magnification/different objective combination provided
The top 10W LED illumination
20,000 hours LED lifespan
50,000 lx objective illumination
LED is lower energy consumption, longer lifespan, safer, more dependable than normal halogen illumination.
2-part column fitted on the five-star base. 5 wheels (2 of lockable)
Power supply voltage: 90V/60HZ-250V/50HZ
DC12V output on the instruments and supply the power for CCD camera
Magnification of binocular 6X
Interpupillary distance 50mm-80mm
Diopter $\pm 5\text{D}$
Linear field 60.8 mm, 37.9mm, 23.6mm, 40.6mm, 25.3mm, 15.8mm
Fine focusing range 10mm
Balancing arm 2-part arm with universal joints
Illumination system Coaxial illumination with 10W LED lamp light source, brightness adjustable, illumination $>30000\text{lx}$
Working distance 25cm
Thanks to the heavy structure, it does not have balance problems

Items and specification subject to change, please contact Cleber for current product information.

CABINET SYSTEMS



The Perfect Solutions for Your Hygiene Concerns

Worktop

Laminate Worktop: 30 mm strong post-formed laminated Chipboard, 3 mm PVC edgebanding

Glass Worktop: 18 mm strong Tempered Glass formed via thermal process

Acrylic Worktop: 30 mm strong antibacterial, %100 Acrylic Solid Surface worktop

Frame

0,90 mm thick DKP-Steel Frame

Phosphate coated base before further paint coating

Producible in all RAL colour shades with an electrostatic powder coating

Modular unit systems with drawers and doors

Double-walled drawer and door fronts for optimal noise reduction

Options for Basic, Telescopic and Soft-Closing Drawer Slides

Door & Drawer Covers

Metal Door & Cover:

Manufactured in special shapes and double-walled for optimal noise reduction.

Producible in all RAL colour shades with an electrostatic powder coating

High Gloss:

Comes with a glossy finish and due to its material, these covers are resistant against most chemicals and scratch-resistant.

Guarantees a neat and nice look due to its PVC edge banding.

Toekick

Coated Plinth:

Integrated into the cabinet, levelling feet with black plastic base

INOX Plinth:

Complete INOX Plinth with a height of 14 cm

Square Legs:

Square Legs with a height of 15 cm

Our cabinet systems are tailored precisely to meet the needs for practical use. Customers and patients will be satisfied with the aesthetic design, the practical workplace and hygienic environment that you are offering. Variation is the key, therefore we provide a wide model range of cabinet modules. The only thing left to you is establishing your very own cabinet system according to your needs.

All cabinet series are produced to fit in Daily procedures of high-class clinics. Choose from various range of models and design them as you wish to treat your patients.



KDSSD02

- Suitable for On-Desk Waste Chute
25 L Waste Bin in Cabinet
Single Door Cabinet System
Suitable for systems with Acrylic Solid Surface
Dimensions: 47 x 45 x 72cm (h)



KDSSD03

- Suitable for On-Desk Waste Chute
26 L Waste Bin in Cabinet for Domestic Waste
8 L Waste Bin for Clinical Waste
Single Door Cabinet System
Suitable for systems with Acrylic Solid Surface
Dimensions: 47 x 45 x 72cm (h)



KDSSD04

- Double Shelf for Storage Section
Single Door Cabinet System
Dimensions: 47 x 49 x 72cm (h)



KDSSD05

- Double Shelf for Storage Section
Single Glass-Door Cabinet System
Dimensions: 47 x 49 x 72cm (h)



KDSCM05

- Double Door Cabinet System
Dimensions: 47 x 49 x 72cm (h)
Upper Door is Removable (Optional)
Addable Sliding Tray (Optional)



KDSCM06

- 1 X Medium Drawer h: 13 cm
Single Door Cabinet System
Single Shelf in Storage Section
Dimensions: 47 x 49 x 72cm (h)



KDSCM07

- Single door cabinet system
Door-Mounted Waste Bin
Push-To-Open Function
Dimensions: 47 x 49 x 72cm (h)



KDSCM08

- Single door cabinet system
Door-Mounted Waste Bin
Dimensions: 47 x 49 x 72cm (h)



KDSLV03

- Door-Mounted Waste Bin
Integrated Waste Chute
Single Door Cabinet System
Dimensions: 47 x 49 x 72cm (h)



KDSLV04

- Door-Mounted Waste Bin
Integrated Waste Chute
Double-Door Cabinet System
Dimensions: 47 x 59 x 72cm (h)



KDSPC02

- Underdesk Keyboard Drawer
1X Small Drawer h: 8 cm
Single door cabinet system
Dimensions: 47 x 49 x 72cm (h)



KDSCH02

- Suitable Outlets on pull-out
Shelf For Cavitron Unit
1 X Cabinet Lid h: 34 cm
1 X Small Drawer h: 8 cm
1 X Large Drawer h: 28,5 cm
Dimensions: 47 x 49 x 72cm (h)



KDSCM09

- 3 X Large Drawers h: 23,5 cm
Dimensions: 47 x 49 x 72cm (h)



KDSCM10

- 3 X Medium Drawers h:15 cm
1 X Large Drawer h: 23,5 cm
Dimensions: 47 x 49 x 72cm (h)



KDSCM11

- 2 X Small Drawers h: 9 cm
2 X Medium Drawers h: 13,5 cm
1 X Large Drawer h: 26 cm
Dimensions:47 x 49 x 72 cm (h)



KDSCM12

- 2 X Small Drawers h: 9 cm
4 X Medium Drawers h: 13,5 cm
Dimensions:47 x 49 x 72 cm (h)



KDSCM13

- 4 X Small Drawers h: 9 cm
3 X Medium Drawers h: 11 cm
Dimensions: 47 x 49 x 72 cm (h)



KDSCM14

- 8 X Small Drawers h: 9 cm
Dimensions: 47 x 49 x 72 cm (h)



KDSK04

- Single Shelf
Curved Cabinet Door
Dimensions: 55 x 25 x 72 cm (h)



KDSKS03

- Single Door Cabinet System
Suitable for Sing Module Systems
Dimensions: 70 x 70 x 72 cm (h)



KDS0005

- Suitable Sections for Face Masks, Gloves, Patients Bibs, Tray Papers, Z Fold Paper Towels, Cups and Saliva Suction Tips Storage for Dental Containers Encased in INOX
Dimensions: 31 x 180 x 50cm (h)



KDS0006

- Suitable Sections for Face Masks, Gloves, Patients Bibs, Tray Papers, Z Fold Paper Towels, Cups and Saliva Suction Tips
Dimensions: 25 x 100 x 50 cm (h)



KDS0007

- Double-Door and 2-Shelf
Dimensions: 30 x 100 x 60 cm (h)



KDS0008

- Suitable Sections for Face Masks, Gloves, Patients Bibs, Tray Papers, Z Fold Paper Towels, Cups and Saliva Suction Tips Storage for Dental Containers and Impression Spoons, Encased in INOX
Dimensions: 31 x 150 x 60 cm (h)



Large And Comfortable Drawers



CABINET SYSTEMS

STERILE AREA

All stainless steel

Oven painted and scratch resistant

Rail system to prevent drawers to crash

Cabinet systems can be created in only combination according to your area



İçerenköy Mahallesi, Cihan Sokak, No:31/ A, 34752 Ataşehir / İstanbul / TÜRKİYE
Tel: +90 216 328 48 47 Fax: +90 216 328 48 41
web: www.clebermed.com e-mail: info@clebermed.com